

UFF4000 IMPACT SERIES

for Roof Deck, Wall/Column and Ceiling Mount Applications

HORIZONTAL LIFELINE SYSTEMS

2024 GUIDE

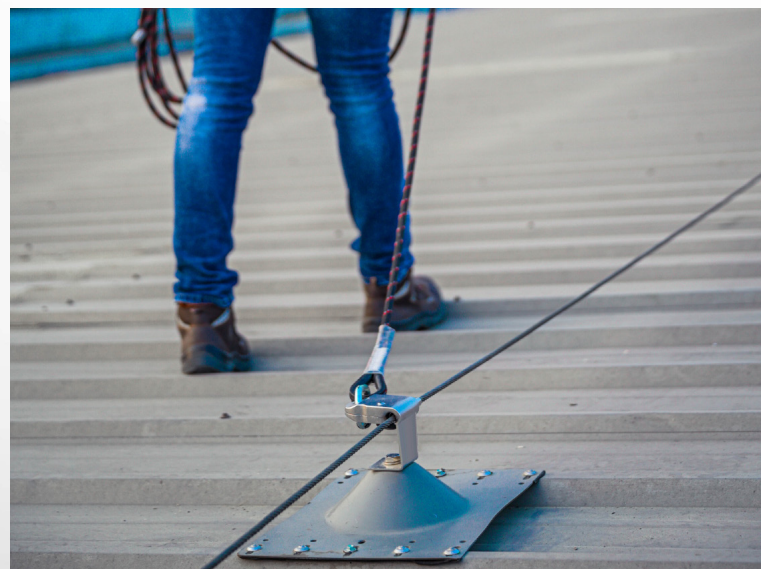


OVERVIEW

KStrong UFF4000 Impact™ engineered horizontal lifelines are designed for both commercial and industrial applications. Our roof mount, column/wall mount and ceiling mount systems are designed to keep workers safer in addressing requirements for maintenance, cleaning, access and inspections. They provide a permanent connection for up to four (4) workers without the need to disconnect along the entire length of the horizontal lifeline through the use of intermediate posts/anchors.

HIGHLIGHTS

- Conforms to all OSHA codes and Applicable ANSI standards and is also third party certified to EN795:2012 Type C and TS 16415:2013, Norms EN 13463-1: 2009 and EN 13463-5: 2003
- Certified by Sira for ATEX to comply with use in potentially explosive atmosphere
- Ideal choice for use in Industries like Petroleum/ Petro-Chemical Plants without fear of causing explosion due to any spark



HORIZONTAL LIFELINE SYSTEMS

- UFF4000 Wire Rope (Roof Mounted)
- UFF4000 Wire Rope (Wall/Column, Ceiling & Floor Mounted)

VERTICAL LIFELINE SYSTEMS

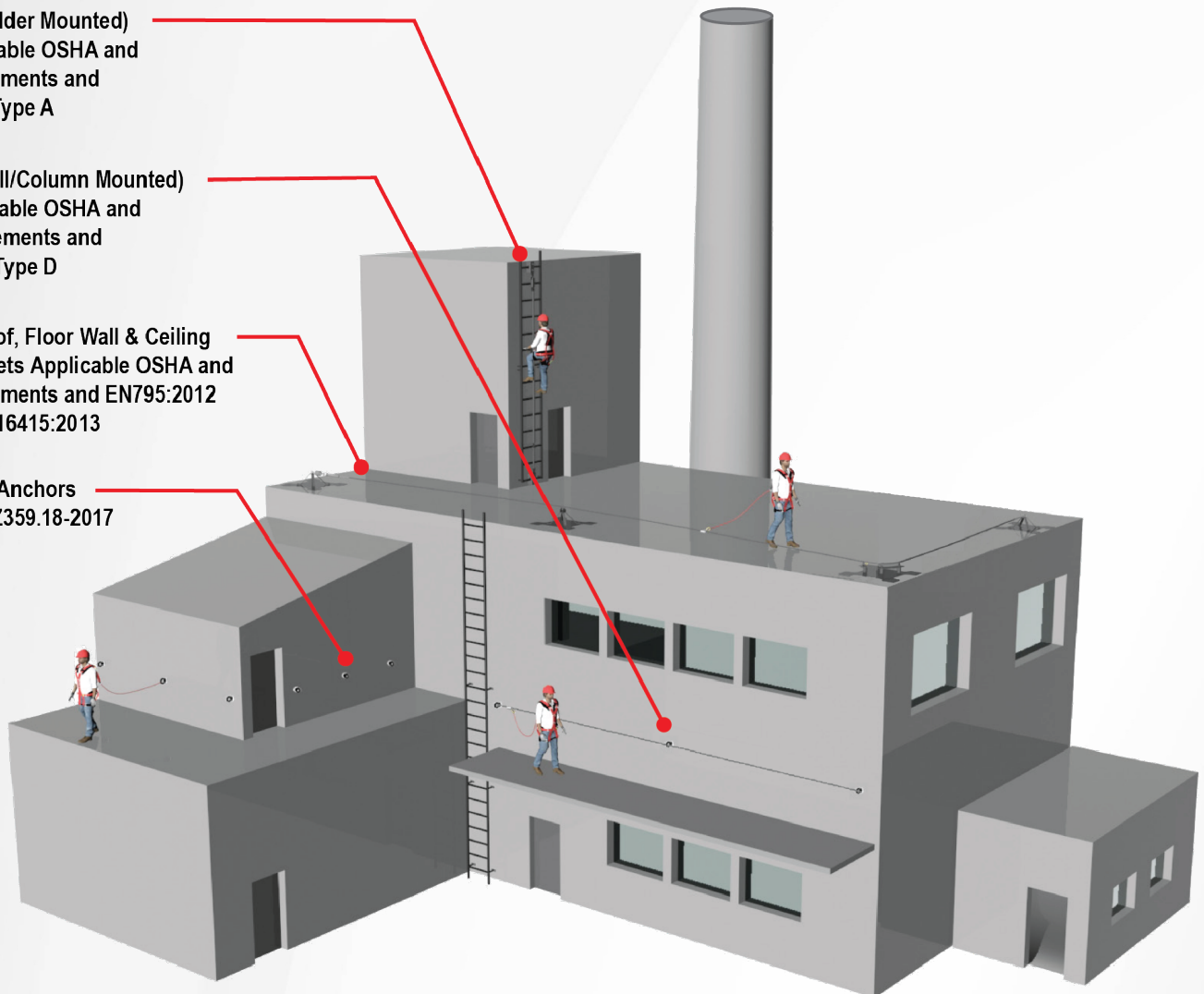
- UFF7000 Wire Rope (Ladder Mounted)

UFF7000 (Ladder Mounted)
Meets Applicable OSHA and
ANSI Requirements and
EN795:2012 Type A

UFF4000 (Wall/Column Mounted)
Meets Applicable OSHA and
ANSI Requirements and
EN795:2012 Type D

UFF4000 (Roof, Floor Wall & Ceiling
Mounted) Meets Applicable OSHA and
ANSI Requirements and EN795:2012
Type C & TS 16415:2013

Single Point Anchors
Meets ANSI Z359.18-2017



SPECIFICATIONS



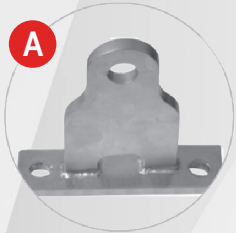
- The IMPACT Cable Line Fall Arrest System meets all applicable OSHA codes and ANSI standards and is certified to EN795:2012 Type A, B, C, and CEN/TS 16415:2013. It is suitable for up to four (4) users simultaneously. It is also being certified by Sira (Certification Number: 11ATEX6276X) for ATEX to comply with use in explosive atmospheres which conforms to Norms EN 13463-1:2009 and EN 13463-5:2003. Shuttle conforms and is certified to EN795:2012 Type B anchor device.
- Flexible anchor line with linear elastic performance properties with a defined elastic coefficient. The impact load generated by a fall arrest event will not exceed 2,248 lbs. (10Kn) as applied to the structure. Energy absorber can absorb up to 5,753ft./lbs. (7800 joules).
- The fall arrest system will be suitable for unrestricted use by up to four users at any one time and any point along the length of the system including between two anchor brackets.
- The rooftop anchor posts are manufactured from 316 stainless steel, 6061 T6 Aluminum, 6005 T5 Aluminum which suitable for metal roof and PEB structures.
- The span distance shall be between 40 ft. (12m) to 50 ft. (15m) between end, corner, and intermediate anchor brackets.
- Wire Rope to be Ø8mm 7 x 19 or 7 x 7 316 stainless steel wire cable with a 7,643 lbf. (34Kn) minimum breaking load.
- The swage termination is manufactured from 316 stainless steel. The swaging is done using a 29,225 lbf. (130kn) hydraulic swaging hand tool and hexlock dies at 6 positions.
- Extremity (End), corner, and intermediate brackets manufactured from 316 stainless steel.
- Labeled according to applicable ANSI and EN 365:2004 General requirements for instruction for use, maintenance, periodic examination, repair, marking, and packaging in accordance with OSHA, ANSI and EN365.
- System Design, application, installation, maintenance, repair, annual inspection, and certification undertaken only by KStrong Registered Installers. Details provided upon request.



CEILING MOUNT APPLICATION



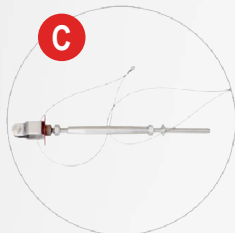
UFF4000 (OVERHEAD/ CEILING MOUNTED)



A
Universal Extremity Plate
UFF113710



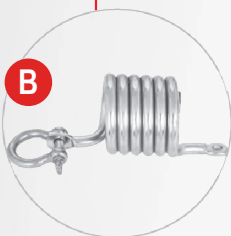
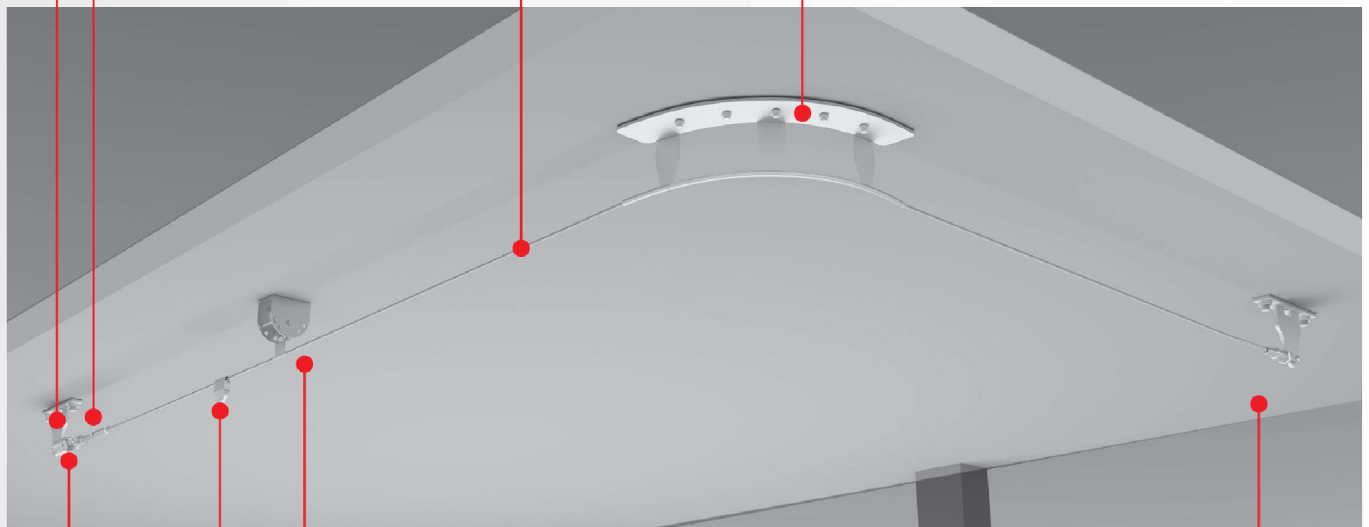
G
Wire Rope (Cable Wire)
UFF518XXX(S)



C
Swaged Tensioner
UFF114100



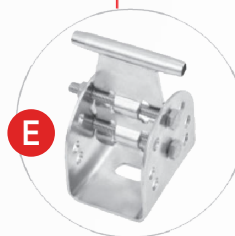
F
Corner Bracket
UFA55204(90)



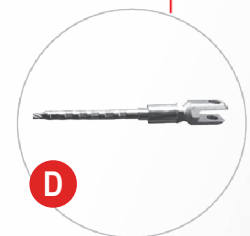
B
Shock Absorber
UFF112100



H
Traveler
UFF119100



E
Intermediate
UFF111510



D
Swaged Cable Extremity
UFF113210

CEILING MOUNT APPLICATION



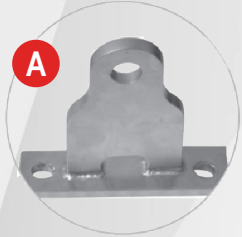
UFF4000 (OVERHEAD/ CEILING MOUNTED)

| Model | Description |
|------------------------|---|
| A UFF113710 | KStrong® IMPACT™ Extremity (Start/Stop) Anchor Plate (SS316) with (2) M12 Fasteners (Column / Wall and Overhead / Ceiling Mount HLL Systems) |
| B UFF112100 | KStrong® IMPACT™ 12K Shock Absorber (Column / Wall, Overhead / Ceiling, and Roof Mount HLL Systems) |
| C UFF114100 | KStrong® IMPACT™ Tensioner with Swaging |
| D UFF113210 | KStrong® IMPACT™ Swaged Cable Termination |
| E UFF111510 | KStrong® IMPACT™ Adjustable Intermediate Bracket (Column / Wall, Overhead / Ceiling, and Roof Mount HLL Systems) |
| F UFA55204(90) | KStrong® IMPACT™ 90° Intermediate Corner Bracket (Overhead / Ceiling and Roof Mount HLL Systems) |
| UFA55204(135) | KStrong® IMPACT™ 135° Intermediate Corner Bracket (Overhead / Ceiling and Roof Mount HLL Systems) |
| G UFF5187X7XXXS | KStrong® 7x7 Wire Cable (Column / Wall, Overhead / Ceiling, and Roof Mount HLL Systems) |
| UFF115101 | KStrong® IMPACT™ HLL Inspection Plate |
| UFF111506 | KStrong® IMPACT™ Repair Tube for HLL's Utilizing 8mm 7x19 Wire Cable (Optional) |
| H UFF119100 | KStrong® IMPACT™ Premium Removable Shuttle with Wheels (Column / Wall and Overhead / Ceiling Mount HLL Systems)(Required for Long Span Systems with Intermediate Anchors) |
| UFFX206008 | KStrong® IMPACT™ Double Tandem Pulley (Column / Wall and Overhead / Ceiling Mount Short Span Systems)(NO Intermediate Anchors) |
| UFA55002(SUB1) | KStrong® IMPACT™ Fastener Assembly for Low-Profile Base Plate (Standing Seam, Metal Panel / R-Panel, Built-Up TPO, and Concrete Roof Decks) or Overhead / Ceiling Anchor |
| UFA55004(90) (SUB1) | KStrong® IMPACT™ 90° Corner Energy Absorbing Bracket for Use with all Low-Profile Base Plates (Standing Seam, Metal Panel / R-Panel, Built-Up TPO, and Concrete Roof Decks) and Overhead / Ceiling Anchors |
| UFA55005(SUB1) (CB) | KStrong® IMPACT™ Variable Bend (15° Max) Intermediate Bracket for Use with all Low-Profile Base Plates (Standing Seam, Metal Panel / R-Panel, Built-Up TPO, and Concrete Roof Decks) and Overhead / Ceiling Anchors |
| UFA55005(SUB1) | KStrong® IMPACT™ Intermediate Bracket for Use with all Low-Profile Base Plates (Standing Seam, Metal Panel / R-Panel, Built-Up TPO, and Concrete Roof Decks) and Overhead / Ceiling Anchors |

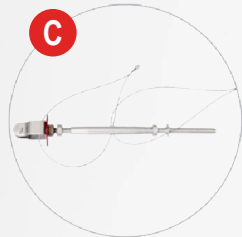
WALL/COLUMN MOUNT APPLICATION



UFF4000 (WALL/COLUMN MOUNTED)



A
Universal Extremity Plate
UFF113710



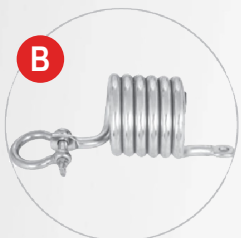
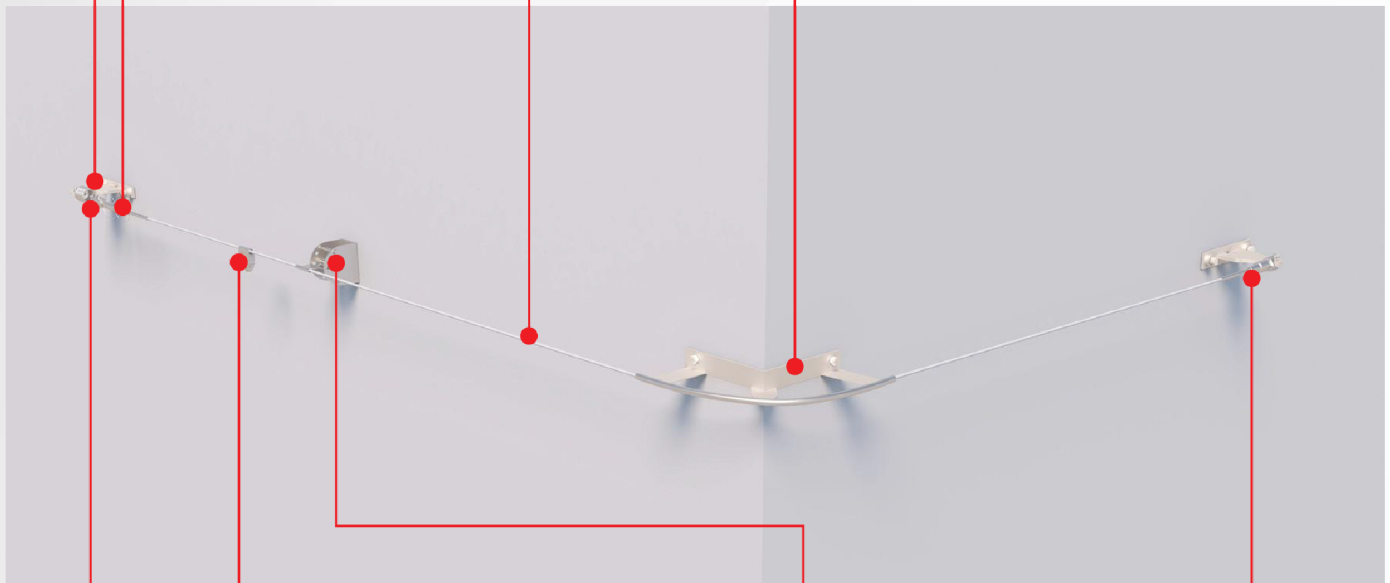
C
Swaged Tensioner
UFF114100



G
Wire Rope (Cable Wire)
UFF518XXX(S)



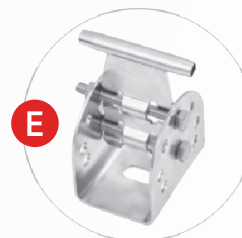
H
Corner Bracket
UFA55206(90)



B
Shock Absorber
UFF112100



F
Traveler
UFF119100



E
Intermediate
UFF111510



D
Swaged Cable Extremity
UFF113210

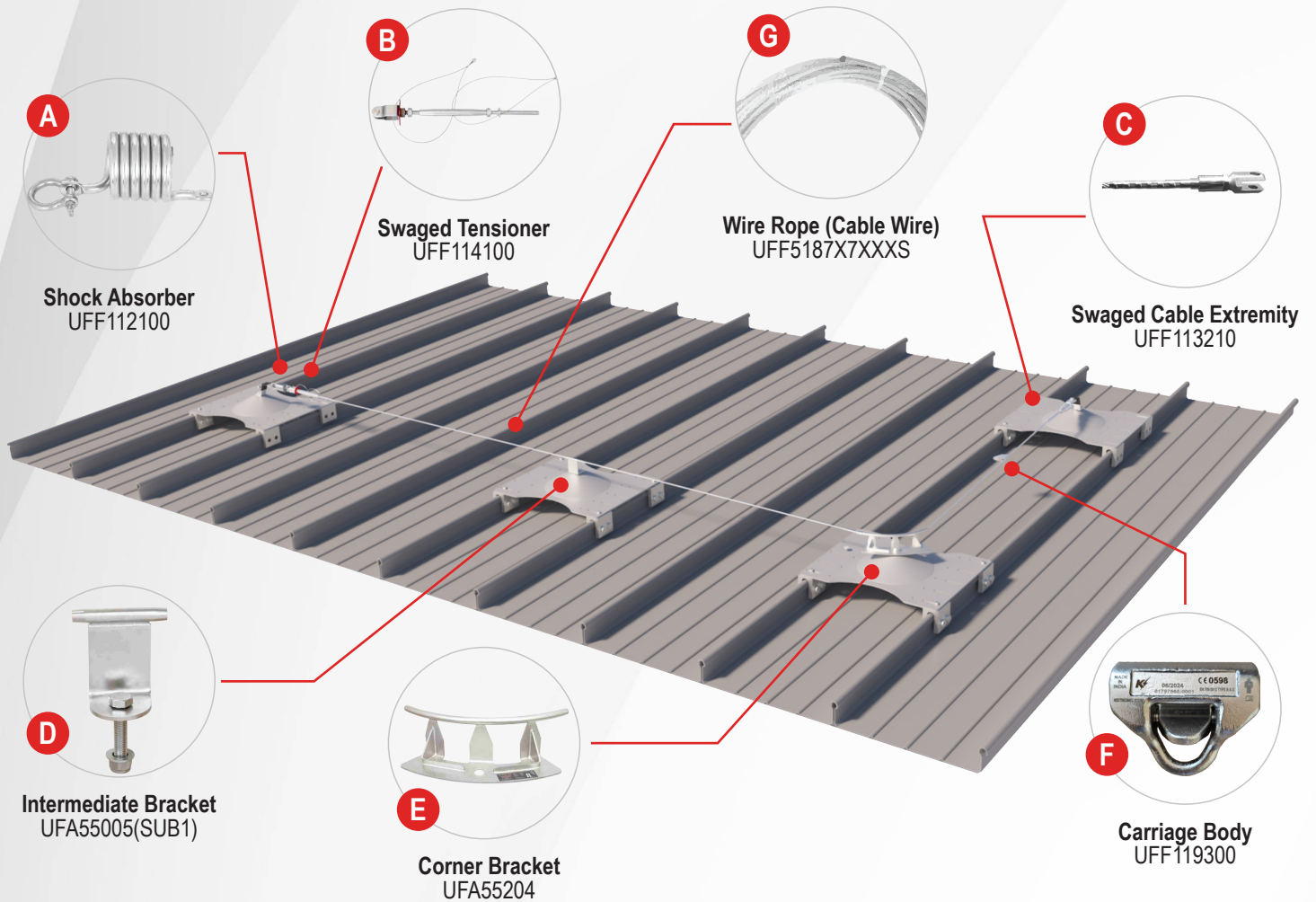
UFF4000 (WALL/COLUMN MOUNTED)

| Model | Description |
|------------------------|---|
| A UFF113710 | KStrong® IMPACT™ Extremity (Start/Stop) Anchor Plate (SS316) with (2) M12 Fasteners (Column / Wall and Overhead / Ceiling Mount HLL Systems) |
| B UFF112100 | KStrong® IMPACT™ 12K Shock Absorber (Column / Wall, Overhead / Ceiling, and Roof Mount HLL Systems) |
| C UFF114100 | KStrong® IMPACT™ Tensioner with Swaging |
| D UFF113210 | KStrong® IMPACT™ Swaged Cable Termination |
| E UFF111510 | KStrong® IMPACT™ Adjustable Intermediate Bracket (Column / Wall, Overhead / Ceiling, and Roof Mount HLL Systems) |
| F UFF119100 | KStrong® IMPACT™ Premium Removable Shuttle with Wheels (Column / Wall and Overhead / Ceiling Mount HLL Systems)(Required for Long Span Systems with Intermediate Anchors) |
| UFF119300 | KStrong® IMPACT™ Removable Shuttle (Column / Wall and Roof Mount HLL Systems ONLY) |
| G UFF5187X7XXXS | KStrong® 7x7 Wire Cable (Column / Wall, Overhead / Ceiling, and Roof Mount HLL Systems) |
| UFF115101 | KStrong® IMPACT™ HLL Inspection Plate |
| UFF111506 | KStrong® IMPACT™ Repair Tube for HLL's Utilizing 8mm 7x19 Wire Cable (Optional) |
| UFA55205(90) | KStrong® IMPACT™ 90° Intermediate Internal Corner Bracket (Column / Wall Mount HLL Systems) |
| H UFA55206(90) | KStrong® IMPACT™ 90° Intermediate External Corner Bracket (Column / Wall Mount HLL Systems) |
| UFX206008 | KStrong® IMPACT™ Double Tandem Pulley (Column / Wall and Overhead / Ceiling Mount Short Span Systems)(NO Intermediate Anchors) |

ROOF/FLOOR MOUNT APPLICATION IMPACT COMPONENTS



STANDING SEAM ROOF DECK (LOW PROFILE)



ROOF/FLOOR MOUNT APPLICATION IMPACT COMPONENTS



STANDING SEAM ROOF DECK (LOW PROFILE)

| Model | Description |
|----------------------|---|
| A UFF112100 | KStrong@ IMPACT™ 12K Shock Absorber (Column / Wall, Overhead / Ceiling, and Roof Mount HLL Systems) |
| B UFF114100 | KStrong@ IMPACT™ Tensioner with Swaging |
| C UFF113210 | KStrong@ IMPACT™ Swaged Cable Termination |
| UFA55006(SUB1) | KStrong@ IMPACT™ Extremity (Start/Stop) Energy Absorbing Bracket for all Roof Mount HLL Systems / Single Point Anchors |
| D UFF111510 | KStrong@ IMPACT™ Adjustable Intermediate Bracket (Column / Wall, Overhead / Ceiling, and Roof Mount HLL Systems) |
| D UFA55005(SUB1) | KStrong@ IMPACT™ Intermediate Bracket for Use with all Low-Profile Base Plates (Standing Seam, Metal Panel / R-Panel, Built-Up TPO, and Concrete Roof Decks) |
| D UFA55311S24 | KStrong@ IMPACT™ Low Profile Intermediate Anchor Post Assembly for Standing Seam Roof Deck (Standing Seam Widths up to 24") |
| D UFA55311S39 | KStrong@ IMPACT™ Low Profile Intermediate Anchor Post Assembly for Standing Seam Roof Deck (Standing Seam Widths up to 39") |
| E UFA55204(90) | KStrong@ IMPACT™ 90° Intermediate Corner Bracket (Overhead / Ceiling and Roof Mount HLL Systems) |
| E UFA55204(135) | KStrong@ IMPACT™ 135° Intermediate Corner Bracket (Overhead / Ceiling and Roof Mount HLL Systems) |
| E UFA55004(90)(SUB1) | KStrong@ IMPACT™ 90° Corner Energy Absorbing Bracket for Use with all Low-Profile Base Plates (Standing Seam, Metal Panel / R-Panel, Built-Up TPO, and Concrete Roof Decks) and Overhead / Ceiling Anchors |
| E UFA55005(SUB1)(CB) | KStrong@ IMPACT™ Variable Bend (15° Max) Intermediate Bracket for Use with all Low-Profile Base Plates (Standing Seam, Metal Panel / R-Panel, Built-Up TPO, and Concrete Roof Decks) and Overhead / Ceiling Anchors |
| E UFA55411S24 | KStrong@ IMPACT™ Low Profile Variable Bend (15° Max) Anchor Post Assembly for Standing Seam Roof Deck (Standing Seam Widths up to 24") |
| E UFA55411S39 | KStrong@ IMPACT™ Low Profile Variable Bend (15° Max) Anchor Post Assembly for Standing Seam Roof Deck (Standing Seam Widths up to 39") |
| E UFA55209(90)S24 | KStrong@ IMPACT™ Low Profile 90° Corner Anchor Post Assembly for Standing Seam Roof Deck (Standing Seam Widths up to 24") |
| E UFA55209(90)S39 | KStrong@ IMPACT™ Low Profile 90° Corner Anchor Post Assembly for Standing Seam Roof Deck (Standing Seam Widths up to 39") |
| F UFF119300 | KStrong@ IMPACT™ Removable Shuttle (Column / Wall and Roof Mount HLL Systems ONLY) |
| G UFF5187X7XXXS | KStrong@ 7x7 Wire Cable (Column / Wall, Overhead / Ceiling, and Roof Mount HLL Systems) |
| UFA55111S24 | KStrong@ IMPACT™ Low Profile Extremity (Start/Stop) Energy Absorbing Anchor Post Assembly for Standing Seam Roof Deck (Standing Seam Widths up to 24") |
| UFA55111S39 | KStrong@ IMPACT™ Low Profile Extremity (Start/Stop) Energy Absorbing Anchor Post Assembly for Standing Seam Roof Deck (Standing Seam Widths up to 39") |
| UFF115101 | KStrong@ IMPACT™ HLL Inspection Plate |
| UFF111506 | KStrong@ IMPACT™ Repair Tube for HLL's Utilizing 8mm 7x19 Wire Cable (Optional) |
| UFA55002(SUB1) | KStrong@ IMPACT™ Fastener Assembly for Low-Profile Base Plate (Standing Seam, Metal Panel / R-Panel, Built-Up TPO, and Concrete Roof Decks) or Overhead / Ceiling Anchor |
| UFA55001 | KStrong@ IMPACT™ Low-Profile Base Plate for Standing Seam or Concrete Roof Decks |
| UFA55003(SUB1) | KStrong@ IMPACT™ Extension Rail Set with Fasteners for Low Profile Standing Seam Base Plate (Standing Seam Widths up to 39") |
| UFA55003(SUB2) | KStrong@ IMPACT™ Extension Rail Set with Fasteners for Low Profile Standing Seam Base Plate (Standing Seam Widths up to 24") |
| UFFS5TX | S-5! Clamp (Type X being either A, B, C, D, E, F, G, or H style)* |



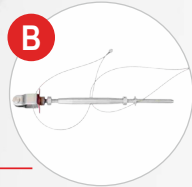
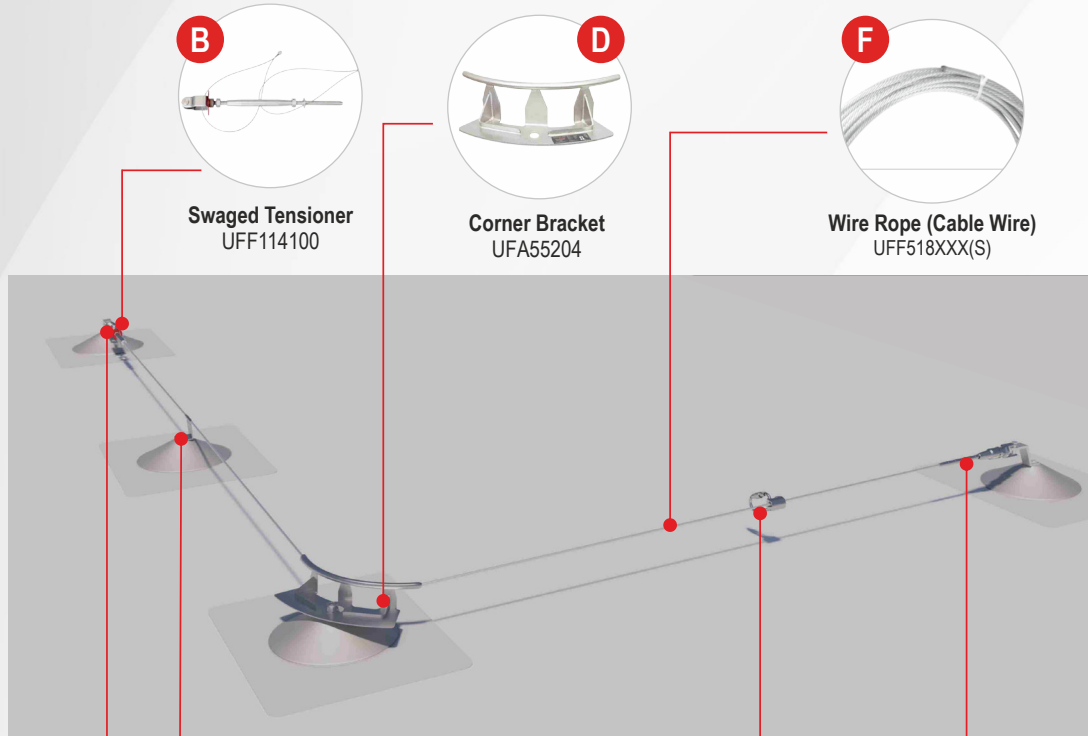
Founded by a veteran metal roof expert, S-5! has been the leading authority on metal roof attachment solutions since 1992. S-5!'s zero-penetration clamps and lifetime brackets attach ancillary items to standing seam and exposed-fastened metal roofs respectively, while maintaining roof integrity and warranties. For more information, visit www.S-5.com.

800-284-1412 / lmcubrs.com

ROOF/FLOOR MOUNT APPLICATION IMPACT COMPONENTS



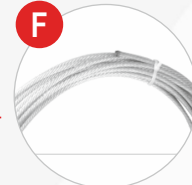
BUILT-UP / MEMBRANE TPO ROOF DECK (LOW PROFILE)



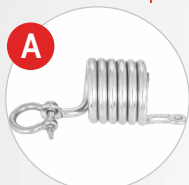
B
Swaged Tensioner
UFF114100



D
Corner Bracket
UFA55204



F
Wire Rope (Cable Wire)
UFF518XXX(S)



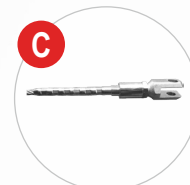
A
Shock Absorber
UFF112100



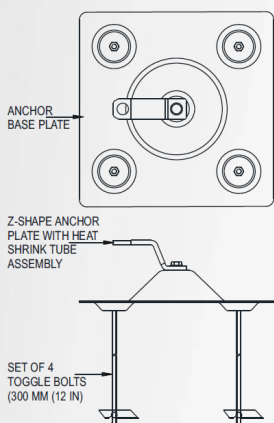
G
Intermediate
UFA55005(SUB1)



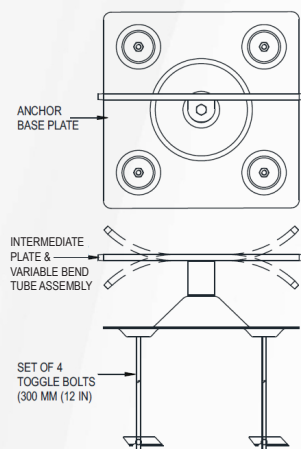
E
Carriage Body
UFF119300



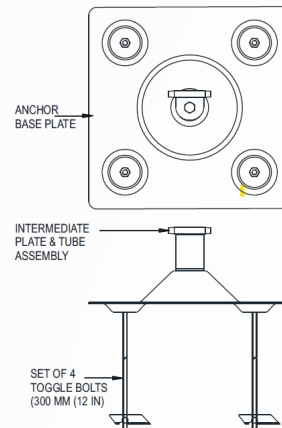
C
Swaged Cable Extremity
UFF113210



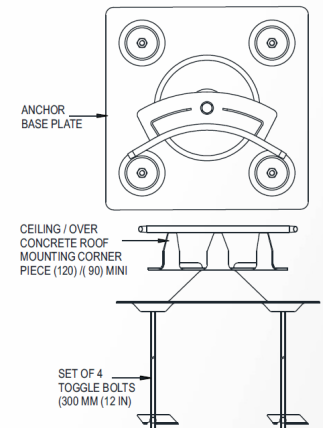
H
ANCHOR POST (EXTREMITY) WITH SET
OF 4 NOS TOGGLE ANCHOR
UFA55111TG12/18)



L
ANCHOR POST (INTERMEDIATE) WITH SET
OF 4 NOS TOGGLE ANCHOR
UFA55411TG12/18)



K
ANCHOR POST (INTERMEDIATE) WITH SET
OF 4 NOS TOGGLE ANCHOR
UFA55311TG12/18)



J
ANCHOR POST (CORNER) WITH SET
OF 4 NOS TOGGLE ANCHOR
UFA55209(90)TG12/18)

ROOF/FLOOR MOUNT APPLICATION IMPACT COMPONENTS



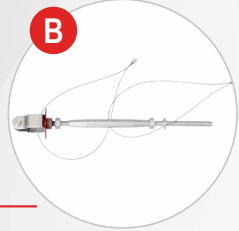
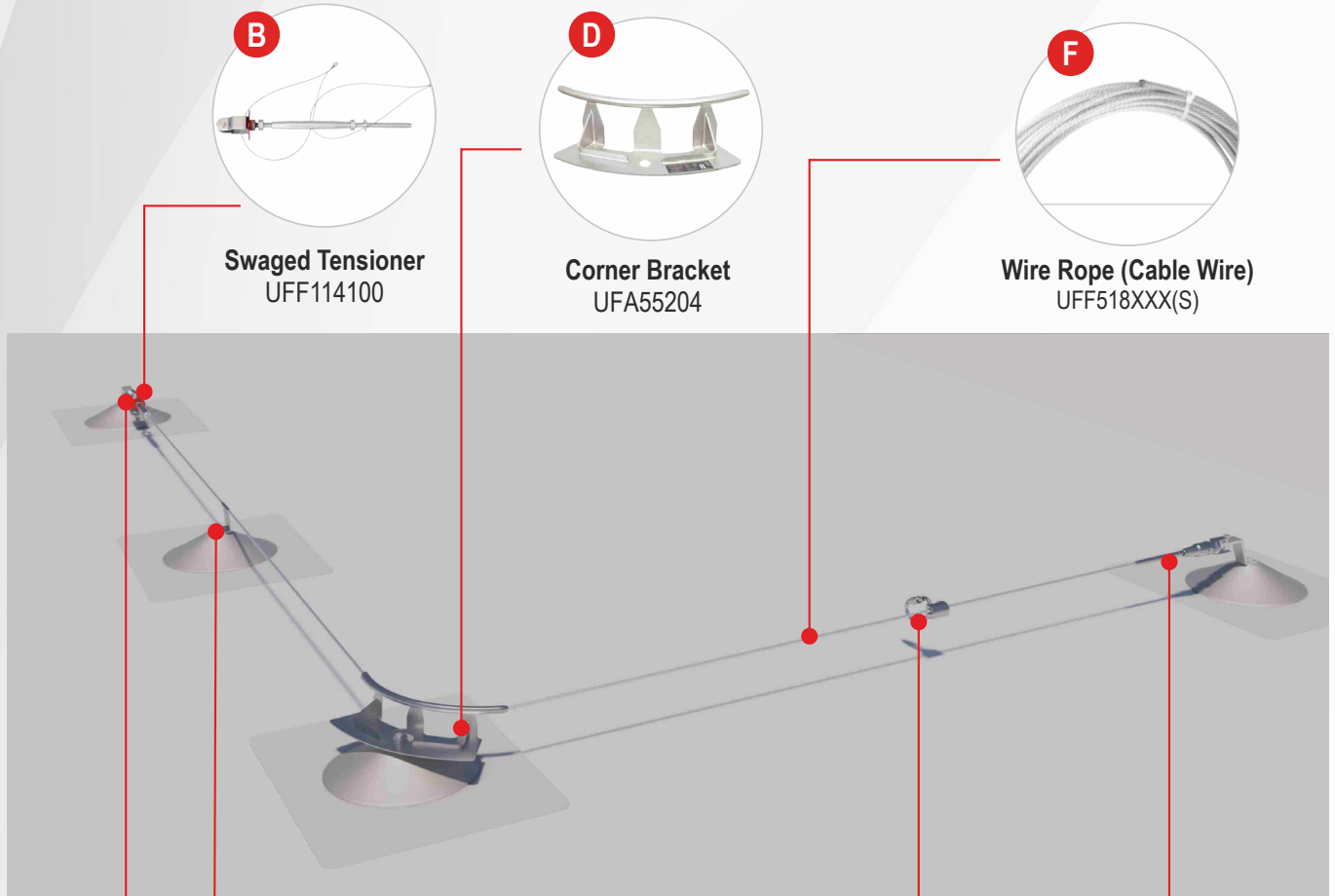
BUILT-UP / MEMBRANE TPO ROOF DECK (LOW PROFILE)

| Model | Description |
|---------------------------|---|
| A UFF112100 | KStrong® IMPACT™ 12K Shock Absorber (Column / Wall, Overhead / Ceiling, and Roof Mount HLL Systems) |
| B UFF114100 | KStrong® IMPACT™ Tensioner with Swaging |
| C UFF113210 | KStrong® IMPACT™ Swaged Cable Termination |
| UFF111510 | KStrong® IMPACT™ Adjustable Intermediate Bracket (Column / Wall, Overhead / Ceiling, and Roof Mount HLL Systems) |
| D UFA55204(90) | KStrong® IMPACT™ 90° Intermediate Corner Bracket (Overhead / Ceiling and Roof Mount HLL Systems) |
| D UFA55204(135) | KStrong® IMPACT™ 135° Intermediate Corner Bracket (Overhead / Ceiling and Roof Mount HLL Systems) |
| E UFF119300 | KStrong® IMPACT™ Removable Shuttle (Column / Wall and Roof Mount HLL Systems ONLY) |
| F UFF5187X7XXXS | KStrong® 7x7 Wire Cable (Column / Wall, Overhead / Ceiling, and Roof Mount HLL Systems) |
| UFF115101 | KStrong® IMPACT™ HLL Inspection Plate |
| UFF111506 | KStrong® IMPACT™ Repair Tube for HLL's Utilizing 8mm 7x19 Wire Cable (Optional) |
| UFA55006(SUB1) | KStrong® IMPACT™ Extremity (Start/Stop) Energy Absorbing Bracket for all Roof Mount HLL Systems / Single Point Anchors |
| UFA55002(SUB1) | KStrong® IMPACT™ Fastener Assembly for Low-Profile Base Plate (Standing Seam, Metal Panel / R-Panel, Built-Up TPO, and Concrete Roof Decks) or Overhead / Ceiling Anchor |
| UFA55004(90)(SUB1) | KStrong® IMPACT™ 90° Corner Energy Absorbing Bracket for Use with all Low-Profile Base Plates (Standing Seam, Metal Panel / R-Panel, Built-Up TPO, and Concrete Roof Decks) and Overhead / Ceiling Anchors |
| UFA55005(SUB1)(CB) | KStrong® IMPACT™ Variable Bend (15° Max) Intermediate Bracket for Use with all Low-Profile Base Plates (Standing Seam, Metal Panel / R-Panel, Built-Up TPO, and Concrete Roof Decks) and Overhead / Ceiling Anchors |
| G UFA55005(SUB1) | KStrong® IMPACT™ Intermediate Bracket for Use with all Low-Profile Base Plates (Standing Seam, Metal Panel / R-Panel, Built-Up TPO, and Concrete Roof Decks) |
| UFA55001(TG) | KStrong® IMPACT™ Low-Profile Base Plate for Built-Up / Membrane TPO Roof Decks |
| UFA55312(SUB1)(12") | Set of 4 Toggle Bolts 12" (300mm) |
| UFA55312(SUB2)(18") | Set of 4 Toggle Bolts 18" (450mm) |
| H UFA55111TG12 | KStrong® IMPACT™ Low Profile Extremity (Start/Stop) Energy Absorbing Anchor Post Assembly for Built-Up / Membrane TPO Roof Deck with 12" Toggle Bolts |
| H UFA55111TG18 | KStrong® IMPACT™ Low Profile Extremity (Start/Stop) Energy Absorbing Anchor Post Assembly for Built-Up / Membrane TPO Roof Deck with 18" Toggle Bolts |
| J UFA55209(90)TG12 | KStrong® IMPACT™ Low Profile 90° Corner Anchor Post Assembly for Built-Up / Membrane TPO Roof Deck with 12" Toggle Bolts |
| J UFA55209(90)TG18 | KStrong® IMPACT™ Low Profile 90° Corner Anchor Post Assembly for Built-Up / Membrane TPO Roof Deck with 18" Toggle Bolts |
| K UFA55311TG12 | KStrong® IMPACT™ Low Profile Intermediate Anchor Post Assembly for Built-Up / Membrane TPO Roof Deck with 12" Toggle Bolts |
| K UFA55311TG18 | KStrong® IMPACT™ Low Profile Intermediate Anchor Post Assembly for Built-Up / Membrane TPO Roof Deck with 18" Toggle Bolts |
| L UFA55411TG12 | KStrong® IMPACT™ Low Profile Variable Bend (15° Max) Anchor Post Assembly for Built-Up / Membrane TPO Roof Deck with 12" Toggle Bolts |
| L UFA55411TG18 | KStrong® IMPACT™ Low Profile Variable Bend (15° Max) Anchor Post Assembly for Built-Up / Membrane TPO Roof Deck with 18" Toggle Bolts |

ROOF/FLOOR MOUNT APPLICATION IMPACT COMPONENTS



CONCRETE ROOF DECK



Swaged Tensioner
UFF114100



Corner Bracket
UFA55204



Wire Rope (Cable Wire)
UFF518XXX(S)



Shock Absorber
UFF112100



Intermediate
UFA55005(SUB1)



Carriage Body
UFF119300

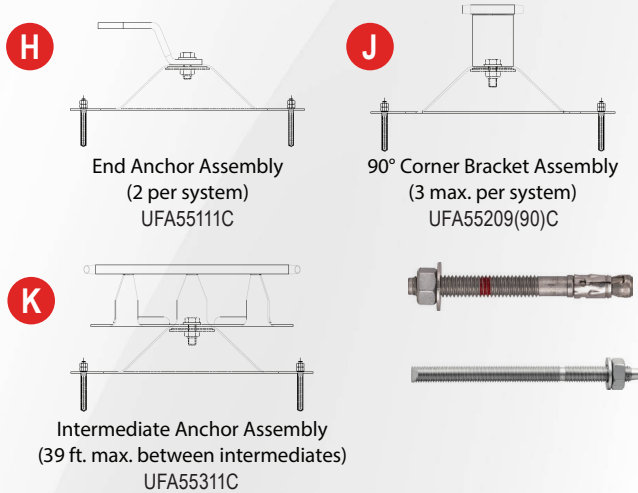


Swaged Cable Extremity
UFF113210

ROOF/FLOOR MOUNT APPLICATION IMPACT COMPONENTS



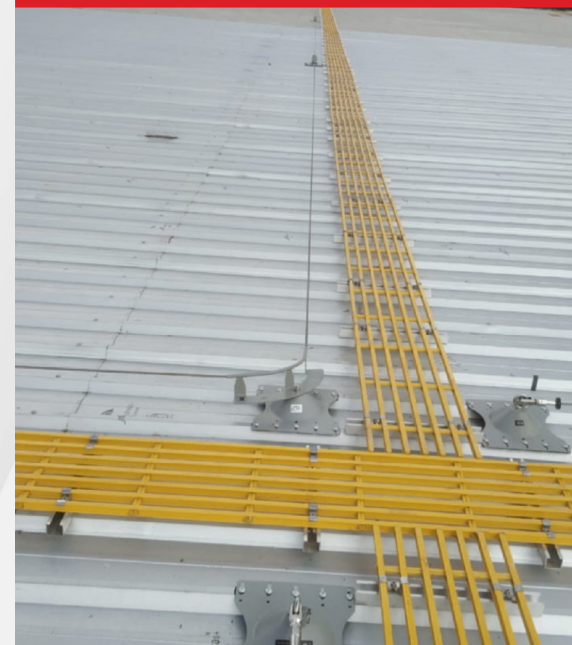
CONCRETE ROOF DECK



FEATURES

- Certified for up to 4 users
- Manufactured from 6061 T6 Aluminum and 316 Stainless Steel
- Suitable for Standing Seam, R-Panel, Built-Up Membrane and Concrete roof profiles
- 8mm wire cable thickness (grade 316)
- Suitable for both fall arrest and fall restraint
- Built-in shock absorber with tension indicator
- Passed system operating temperatures between -40°C to +60°C
- Uses water proof rivets and self drilling screws to attach the system base plates to the roof deck. Depending on the roof deck profile, the use of toggle bolts may be used.

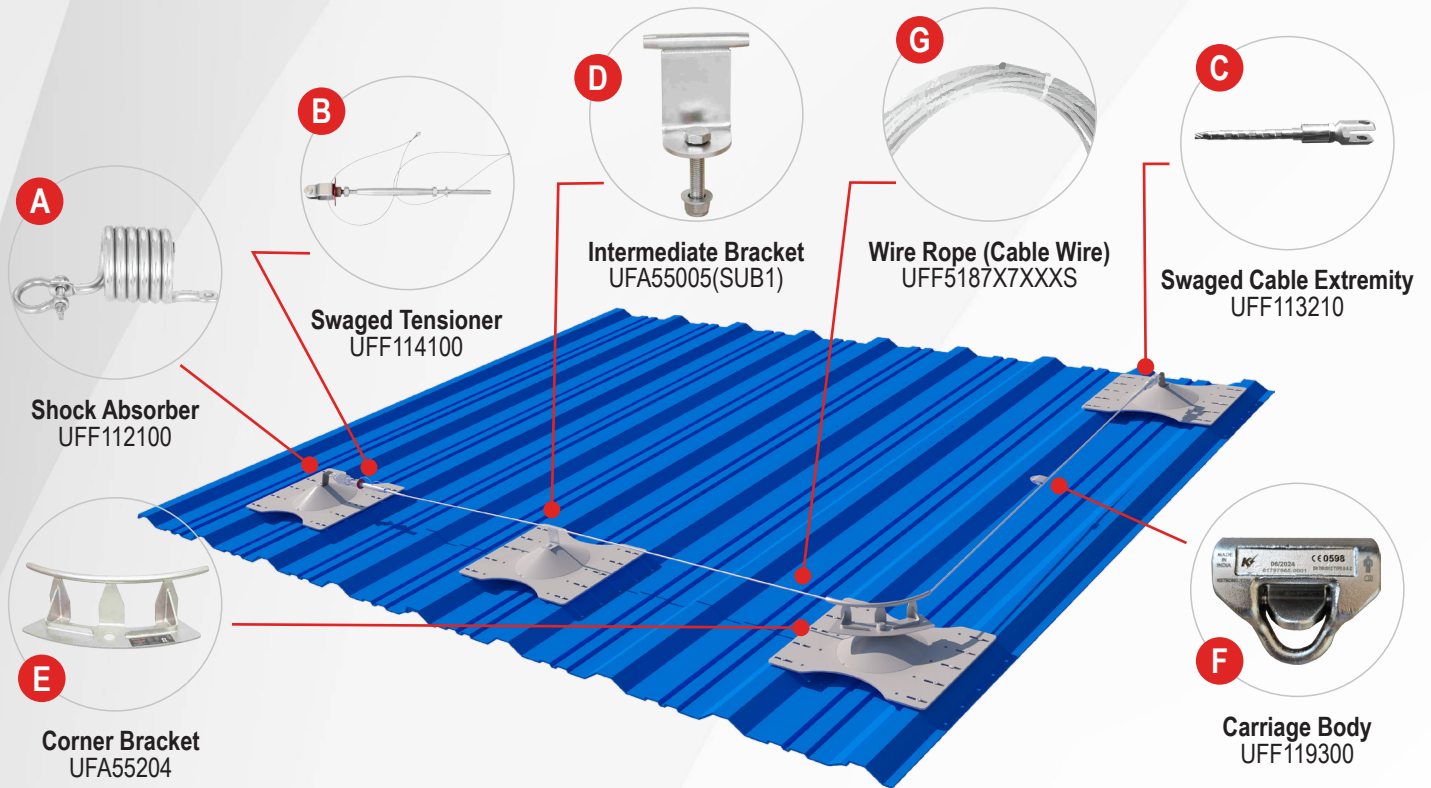
| Model | Description |
|--------------------|---|
| A UFF112100 | KStrong® IMPACT™ 12K Shock Absorber (Column / Wall, Overhead / Ceiling, and Roof Mount HLL Systems) |
| B UFF114100 | KStrong® IMPACT™ Tensioner with Swaging |
| C UFF113210 | KStrong® IMPACT™ Swaged Cable Termination |
| UFF111510 | KStrong® IMPACT™ Adjustable Intermediate Bracket (Column / Wall, Overhead / Ceiling, and Roof Mount HLL Systems) |
| D UFA55204(90) | KStrong® IMPACT™ 90° Intermediate Corner Bracket (Overhead / Ceiling and Roof Mount HLL Systems) |
| D UFA55204(135) | KStrong® IMPACT™ 135° Intermediate Corner Bracket (Overhead / Ceiling and Roof Mount HLL Systems) |
| E UFF119300 | KStrong® IMPACT™ Removable Shuttle (Column / Wall and Roof Mount HLL Systems ONLY) |
| F UFF5187X7XXXS | KStrong® 7x7 Wire Cable (Column / Wall, Overhead / Ceiling, and Roof Mount HLL Systems) |
| UFF115101 | KStrong® IMPACT™ HLL Inspection Plate |
| UFF111506 | KStrong® IMPACT™ Repair Tube for HLL's Utilizing 8mm 7x19 Wire Cable (Optional) |
| UFA55006(SUB1) | KStrong® IMPACT™ Extremity (Start/Stop) Energy Absorbing Bracket for all Roof Mount HLL Systems / Single Point Anchors |
| UFA55002(SUB1) | KStrong® IMPACT™ Fastener Assembly for Low-Profile Base Plate (Standing Seam, Metal Panel / R-Panel, Built-Up TPO, and Concrete Roof Decks) or Overhead / Ceiling Anchor |
| UFA55004(90)(SUB1) | KStrong® IMPACT™ 90° Corner Energy Absorbing Bracket for Use with all Low-Profile Base Plates (Standing Seam, Metal Panel / R-Panel, Built-Up TPO, and Concrete Roof Decks) and Overhead / Ceiling Anchors |
| UFA55005(SUB1)(CB) | KStrong® IMPACT™ Variable Bend (15° Max) Intermediate Bracket for Use with all Low-Profile Base Plates (Standing Seam, Metal Panel / R-Panel, Built-Up TPO, and Concrete Roof Decks) and Overhead / Ceiling Anchors |
| G UFA55005(SUB1) | KStrong® IMPACT™ Intermediate Bracket for Use with all Low-Profile Base Plates (Standing Seam, Metal Panel / R-Panel, Built-Up TPO, and Concrete Roof Decks) |
| UFA55001 | KStrong® IMPACT™ Low-Profile Base Plate for Standing Seam or Concrete Roof Decks |
| H UFA55111C | KStrong® IMPACT™ Low Profile Extremity (Start/Stop) Energy Absorbing Anchor Post Assembly for Concrete Roof Deck |
| J UFA55209(90)C | KStrong® IMPACT™ Low Profile 90° Corner Anchor Post Assembly for Concrete Roof Deck |
| K UFA55311C | KStrong® IMPACT™ Low Profile Intermediate Anchor Post Assembly for Concrete Roof Deck |
| UFA55411C | KStrong® IMPACT™ Low Profile Variable Bend (15° Max) Anchor Post Assembly for Concrete Roof Deck |



ROOF/FLOOR MOUNT APPLICATION IMPACT COMPONENTS



METAL PANEL / R-PANEL ROOF DECK (LOW PROFILE)



| Model | Description |
|----------------------|---|
| A UFF112100 | KStrong® IMPACT™ 12K Shock Absorber (Column / Wall, Overhead / Ceiling, and Roof Mount HLL Systems) |
| B UFF114100 | KStrong® IMPACT™ Tensioner with Swaging |
| C UFF113210 | KStrong® IMPACT™ Swaged Cable Termination |
| D UFF111510 | KStrong® IMPACT™ Adjustable Intermediate Bracket (Column / Wall, Overhead / Ceiling, and Roof Mount HLL Systems) |
| D UFA55005(SUB1) | KStrong® IMPACT™ Intermediate Bracket for Use with all Low-Profile Base Plates (Standing Seam, Metal Panel / R-Panel, Built-Up TPO, and Concrete Roof Decks) |
| D UFA55311 | KStrong® IMPACT™ Low Profile Intermediate Anchor Post Assembly for Metal Panel / R-Panel Roof Deck |
| E UFA55204(90) | KStrong® IMPACT™ 90° Intermediate Corner Bracket (Overhead / Ceiling and Roof Mount HLL Systems) |
| E UFA55204(135) | KStrong® IMPACT™ 135° Intermediate Corner Bracket (Overhead / Ceiling and Roof Mount HLL Systems) |
| E UFA55004(90)(SUB1) | KStrong® IMPACT™ 90° Corner Energy Absorbing Bracket for Use with all Low-Profile Base Plates (Standing Seam, Metal Panel / R-Panel, Built-Up TPO, and Concrete Roof Decks) and Overhead / Ceiling Anchors |
| E UFA55005(SUB1)(CB) | KStrong® IMPACT™ Variable Bend (15° Max) Intermediate Bracket for Use with all Low-Profile Base Plates (Standing Seam, Metal Panel / R-Panel, Built-Up TPO, and Concrete Roof Decks) and Overhead / Ceiling Anchors |
| E UFA55209(90) | KStrong® IMPACT™ Low Profile 90° Corner Anchor Post Assembly for Metal Panel / R-Panel Roof Deck |
| E UFA55411 | KStrong® IMPACT™ Low Profile Variable Bend (15° Max) Anchor Post Assembly for Metal Panel / R-Panel Roof Deck |
| F UFF119300 | KStrong® IMPACT™ Removable Shuttle (Column / Wall and Roof Mount HLL Systems ONLY) |
| G UFF5187X7XXXS | KStrong® 7x7 Wire Cable (Column / Wall, Overhead / Ceiling, and Roof Mount HLL Systems) |
| UFA55006(SUB1) | KStrong® IMPACT™ Extremity (Start/Stop) Energy Absorbing Bracket for all Roof Mount HLL Systems / Single Point Anchors |
| UFA55111 | KStrong® IMPACT™ Low Profile Extremity (Start/Stop) Energy Absorbing Anchor Post Assembly for Metal Panel / R-Panel Roof Deck |
| UFF115101 | KStrong® IMPACT™ HLL Inspection Plate |
| UFF111506 | KStrong® IMPACT™ Repair Tube for HLL's Utilizing 8mm 7x19 Wire Cable (Optional) |
| UFA55002(SUB1) | KStrong® IMPACT™ Fastener Assembly for Low-Profile Base Plate (Standing Seam, Metal Panel / R-Panel, Built-Up TPO, and Concrete Roof Decks) or Overhead / Ceiling Anchor |
| UFFBULBRIV | KStrong® IMPACT™ Set of 8 quantity pop rivets for attachment of Base Plate for Metal Panel / R-Panel Roof Deck |
| UFA55001(SUB1) | KStrong® IMPACT™ Low-Profile Base Plate for Metal Panel / R-Panel Roof Deck |

WARRANTY & SERVICES

- All systems come with a warranty period of 12 months.
- All systems are thus further warrantied with 20 years provided they are inspected once annually according to the requirements of OSHA, ANSI and EN365.
- Competent Person Training on the Inspection, Use and Maintenance of any system will be provided along with Competent Person Certificate.
- Competent Person training on how to conduct periodic inspection will be provided.



RECOMMENDED PPE

While working on a roof the user can select from a range of Strong fall protection PPE to work safely with either Lanyards, Rope lines or SRLs in conjunction with a Full Body Harness.



Energy Absorbing
Lanyard
UFL201101



6 ft. Micron™
SRL UFS351102



Manual 3 ft. Shock
Absorbing Rope Grab
Assembly | UFG611020



White Polydac Rope
UFR200025 | 25 ft.
UFR200050 | 50 ft.



Full Body
Roofers Harness
UFH10201G



FULL-SERVICE PROVIDER

KStrong is one of the world's largest Full-Service Providers of Fall Protection including Engineered Fall Protection System, Design, Installation and Training Services. With over 4000 employees worldwide and nearly 43 acres of production under roof, KStrong is well positioned to help your company protect its most valuable assets, its employees.

DISTRIBUTION BY:



KStrong Inc.

PROUD MEMBER



AMERICAN SOCIETY OF SAFETY PROFESSIONALS

WWW.LMCURBS.COM

800.284.1412